

LOCKING CYLINDERS

hydraulic, without spring reset, single-acting, pmax. 500 bar

Description:

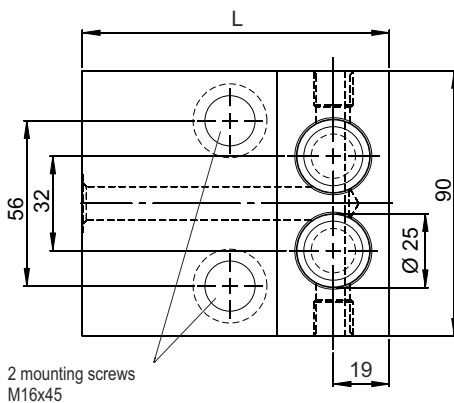
The single-acting locking cylinder is suitable for locking of movable machine tables. It is equipped with either one or two pistons.

The loading of the piston is done hydraulically via a centralized pressure system connected to a G1/4 threaded port. Each piston has its separate port.

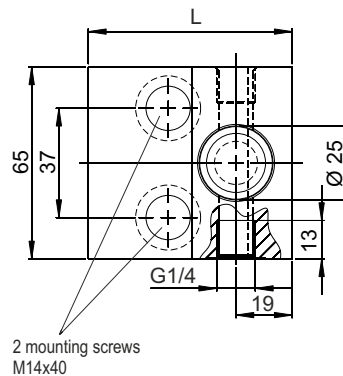
Various locking cylinders can be integrated into the machine control system. The relief of the piston is effected by the pressure reduction in the pressure system.

Important notice:

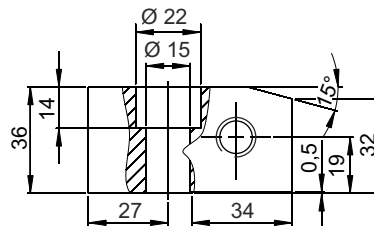
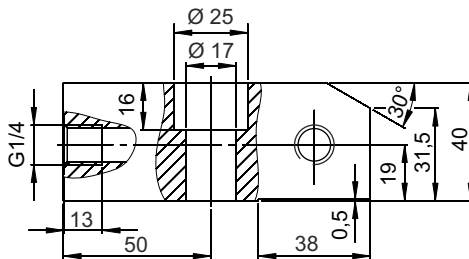
The locking cylinder does not have any safety device to prevent the piston from falling out of the housing. It is not allowed to pressurise the locking cylinder if there is no counter surface for the piston.



2 mounting screws
M16x45



2 mounting screws
M14x40



Technical data:

with 2 pistons

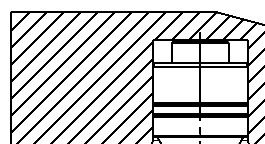
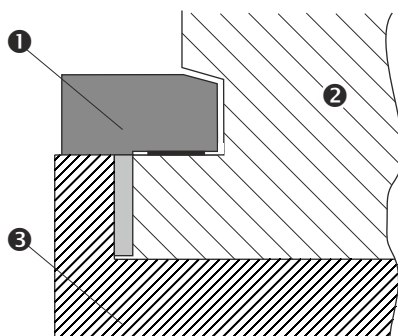
Max. piston stroke	[mm]	2
Locking force 100 bar	[kN]	9,8
Locking force 500 bar	[kN]	49,0
Order numbers:		
Lock. cylinder L= 104	[mm]	KZYL-5-02-001
Lock. cylinder L= 119	[mm]	KZYL-5-02-002
Piston seal (spare part)		6025-010
Locking screw G1/4 (spare part)		7900-001
Mounting screw M16x45, 10.9 ⁽¹⁾		7016-025

⁽¹⁾available as accessories

with 1 piston

Max. piston stroke	[mm]	5
Locking force 100 bar	[kN]	4,9
Locking force 500 bar	[kN]	24,5
Order numbers:		
Lock. cylinder L= 69	[mm]	KZYL-5-01-001
Lock. cylinder L= 83	[mm]	KZYL-5-01-002
Piston seal (spare part)		6025-010
Locking screw G1/4 (spare part)		7900-001
Mounting screw M14x40, 8.8 ⁽¹⁾		7014-011

Application example:

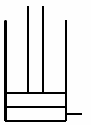


- ① Locking cylinder
- ② Machine table
- ③ Machine base



Webcode: 023002

We also design
and manufacture
special designs



Materials:

- ⊗ Housing: free-cutting steel, burnished
- ⊗ Piston: red brass
- ⊗ Piston seal: NBR

Advantages:

- ⊗ Compact design
- ⊗ High locking forces
- ⊗ Locking pressure can be monitored
- ⊗ Full use of pressure

Safety instructions:

To increase the operational safety during the application of locking cylinders, we recommend the installation of pressure monitoring elements in each hydraulic circuit.

If possible, the locking cylinder should be connected via two separate hydraulic circuits. each should be secured by a check valve (e.g. see data sheet 700-10).

HYDROKOMP®
Hydraulische Komponenten GmbH

Siemensstraße 16, 35325 Mücke (Germany)
Phone: +49 6401 225999-0
Fax: +49 6401 225999-50
E-mail: info@hydrokomp.de
Internet: www.hydrokomp.de